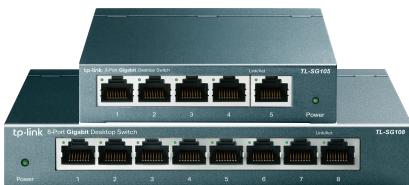




10/100/1000 Mbps Desktop Switch

MODELS: TL-SG105/TL-SG108/TL-SG116



TL-SG105/TL-SG108



TL-SG116

Highlights

- 10/100/1000 Mbps Auto-Negotiation RJ45 ports supporting Auto-MDI/MDIX
- Green Ethernet technology saves power
- IEEE 802.3x flow control provides reliable data transfer
- Steel housing, desktop or wall-mounting design
- Support 802.1p/DSCP QoS and IGMP Snooping function
- Plug and play, no configuration needed

Overview

The TP-Link Gigabit Unmanaged Switch TL-SG105/TL-SG108/TL-SG116 provide an easy way to expand your wired network. With all ports support Auto-MDI/MDIX, there's no need to worry about the type of cable to use. Featuring full duplex mode, TL-SG105/TL-SG108/TL-SG116 can send and receive data at a rate up to 2000Mbps, making it an ideal choice for expanding your high performance wired network. Moreover, with innovative energy-efficient technology, TL-SG105/TL-SG108/TL-SG116 can save power consumption, making it an eco-friendly solution for your home or office network.

Gigabit Switch

Featured 10/100/1000Mbps ports, TL-SG105/TL-SG108/TL-SG116 greatly expands your network capacity, enabling instant large files transferring. So, power users in the home, office, workgroup, or creative production environment can now move large, bandwidth-intensive files faster. Transfer graphics, CGI, CAD, or multimedia files across the network instantly.

Power down Idle Ports

When a computer or network equipment is off, the corresponding port of a traditional switch will continue to consume considerable amounts of power. TL-SG105/TL-SG108/TL-SG116 can automatically detect the link status of each port and reduce the power consumption of ports that are idle, resulting in up to reduction in power use.

Power Budget According to Cable Length




Ideally, shorter cable would use less power because of less power degradation over their length. This is not the case with most devices as they will use the same amount of power across the cable regardless of the length.

Easy to Use

The auto features of this gigabit switch make installation plug and play and hassle-free. No configuring is required. Auto MDI/MDIX eliminate the need for crossover cables. Auto-negotiation on each port senses the link speed of a network device (either 10, 100, or 1000 Mbps) and intelligently adjusts for compatibility and optimal performance.

Specifications

Features & Performance

| | | | |
|------------------------|--|--|---|
| Product Picture |  |  |  |
| Model | TL-SG105 | TL-SG108 | TL-SG116 |
| Standards | IEEE 802.3i, IEEE 802.3u, IEEE 802.3ab, IEEE 802.3x, IEEE 802.1p | | |
| Forwarding Mode | Store and forward | | |
| Interface | 5 10/100/1000 Mbps RJ45 ports Auto Negotiation Auto MDI/MDIX | 8 10/100/1000 Mbps RJ45 ports Auto Negotiation Auto MDI/MDIX | 16 10/100/1000 Mbps RJ45 ports Auto Negotiation Auto MDI/MDIX |
| Switching Capacity | 10 Gbps | 16 Gbps | 32 Gbps |
| MAC Address Table | 2K | 4K | 8K |
| Packet Forwarding Rate | 7.4 Mpps | 11.9 Mpps | 23.8 Mpps |
| Buffer Memory | 1 Mb | 1.5 Mb | 4.1 Mb |
| Jumbo Frame | 16 KB | 16 KB | 10 KB |
| Advanced Features | Green Technology 802.3x Flow Control 802.1p/DSCP QoS IGMP Snooping (For TL-SG105/TL-SG108) Loop Prevention | | |
| Max Power Consumption | 3.0 W (220 V/50 Hz) | 3.75 W (220 V/50 Hz) | 9.78 W (220 V/50 Hz) |
| Max Heat Dissipation | 10.23 BTU/h | 12.79 BTU/h | 33.35 BTU/h |
| LEDs | Power, Link/Act (indicators per port built into RJ45 port) | | |
| Power Supply | External Adapter (output: 5 VDC/0.6 A) | External Adapter (output: 5 VDC/0.6 A) | External Adapter(output: 12 VDC/1.0 A) |
| Dimensions (W × D × H) | 3.9 × 3.9 × 1.0 in. (99.8 × 98 × 25 mm) | 6.2 × 4.0 × 1.0 in. (158 × 101 × 25 mm) | 11.26 × 4.4 × 1.0 in. (286*111.7*25.4 mm) |
| Certifications | CE, FCC, RoHS | | |
| Environment | Operating Temperature: 0 °C~40 °C (32 °F~104 °F) Storage Temperature: -40 °C~70 °C (-40 °F~158 °F) Operating Humidity: 10% ~ 90%RH, non-condensing Storage Humidity: 5%~95%RH, non-condensing | | |

Ordering Information

| Product Model | Description |
|---------------|---|
| TL-SG105 | 5-Port 10/100/1000 Mbps Desktop Switch |
| TL-SG108 | 8-Port 10/100/1000 Mbps Desktop Switch |
| TL-SG116 | 16-Port 10/100/1000 Mbps Desktop Switch |

<https://www.tp-link.com>

Specifications are subject to change without notice. All brands and product names are trademarks or registered trademarks of their respective holders. © 2023 TP-Link