

PHILIPS

LCD monitor with
USB-C

Business Monitor

3000 series

24 (23.8" / 60.47 cm diag.)

2560 x 1440 (Quad HD)

24B2U3601



Redefining workflow productivity

This monitor delivers business efficiency. Not only is it equipped with essential features, but it also has ones that stand out like its 120 Hz refresh rate, SoftBlue, Flicker-Free, VESA mount and more.

Designed for the way you work

- Built-in stereo speakers for multimedia
- Smart Link Sync: for uniform daisy-chained displays
- SmartErgoBase enables user-friendly ergonomic adjustments
- D-Mode: Optimised for subtle greyscale perception
- Eyesafe-certified blue light protection and colour accuracy
- Ultra Slim Bezel: for minimal edges and more screen
- SoftBlue Technology: for comfortable viewing

Single cable USB-C connection

- RJ-45 to USB-C gives easy network connection with security
- USB 3.2 high-speed data transfer

Superb Picture Quality

- 120 Hz refresh rates for ultra-smooth images
- IPS LED wide view technology for image and colour accuracy
- Crystal clear images with Quad HD 2560 x 1440 pixels

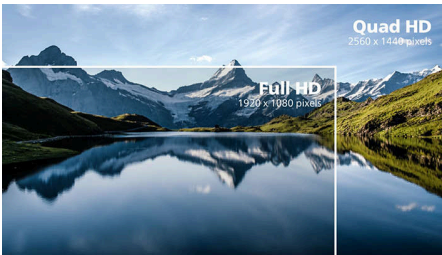
Highlights

IPS technology



IPS displays use an advanced technology that gives you extra-wide viewing angles of 178/178 degrees, making it possible to view the display from almost any angle. Unlike standard TN panels, IPS displays give you remarkably crisp images with vivid colours, making them ideal not only for Photos, movies and web browsing, but also for professional applications that demand colour accuracy and consistent brightness at all times.

CrystalClear images



These Philips screens deliver CrystalClear, Quad HD 2560 x 1440 or 2560 x 1080 pixel images. Utilising high performance panels with a high-density pixel count enabled by high bandwidth sources, these new displays will make your images and graphics come alive. Whether you are a demanding professional requiring extremely detailed information for CAD-CAM solutions using 3D graphic applications, or a financial wizard working on huge spreadsheets, Philips displays will give you CrystalClear images.

120 Hz fast refresh



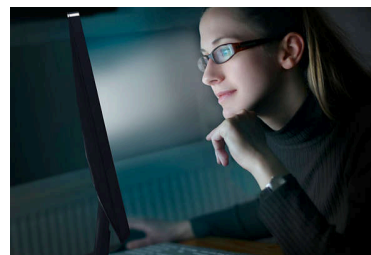
The smoother the motion, the less strain on your eyes. This Philips monitor is equipped with an improved 120 Hz refresh rate. Whenever you scroll, switch between applications or navigate complex spreadsheets, you experience smoother and more precise movements. That means you can work as long as you need with minimal visual fatigue—all while increasing the speed of your workflow.

Ultra-Slim Bezel



This monitor makes your viewing experience feel more seamless and complete by reducing the amount of frame surrounding the screen. The Ultra-Slim Bezel feature makes for an elegant transition from the screen to the narrow monitor bezel, thereby making it more beautiful in form and function.

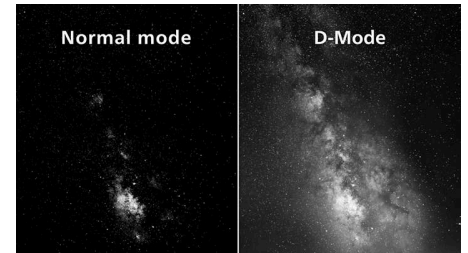
SoftBlue Technology with Low Blue Light Panel



SoftBlue technology offers increased visual comfort and protection against adverse health effects caused by prolonged exposure to blue light. With the low blue-light panel, the ratio of display emission light in the range of 415-455 nm

to 400-500 nm is reduced to less than 50%. As a result, the SoftBlue technology provides optimal visual comfort, minimises eye strain and supports sustained focus. Not to mention, SoftBlue LED technology is tested and TÜV Rheinland Low Blue Light (Hardware Solution) certified for its effectiveness in reducing blue light emissions.

D-Mode



Reveal every hidden detail in the dark-toned areas of your display. D-Mode enhances greyscale detail to make subtle tonal differences easier to see. Based on the greyscale perception model defined by the DICOM Part 14 GSDF standard, it improves the visibility of details that standard display settings may miss. The result is clearer differentiation between subtle shades and improved detail visibility in greyscale content such as technical illustrations, scans and other high-detail imagery.

Smart Link Sync



Easily create a seamless multi-monitor workspace with Smart Link Sync, designed to automatically align display settings across daisy-chained monitors. Whether you're designing, presenting or multitasking, enjoy consistent brightness and colour without manual tweaks. Choose from OSD Sync or Light Sync modes (Low, Mid or High) on the primary monitor to match your environment. For identical monitors, any mode ensures uniform visuals; for mixed models, Light Sync intelligently adjusts luminance for a balanced, professional look across screens.



Business Monitor

LCD monitor with USB-C

24B2U3601/00

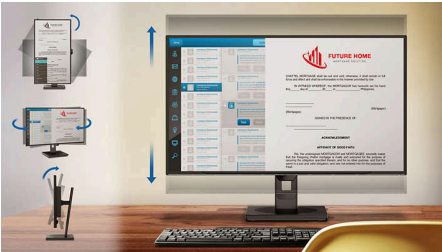
Highlights

eyesafe® CERTIFIED 2.0 (RPF 40)



The Philips display meets the eyesafe® CERTIFIED 2.0 standard to truly protect you from long exposure to blue light. The always-on blue light filter not only helps reduce digital eye strain, but also guarantees colour integrity.

SmartErgoBase



The SmartErgoBase is a monitor base that delivers ergonomic display comfort and provides cable management. The base can swivel, tilt and

rotate to various angles to ensure maximum comfort. The height-adjustable stand guarantees the optimal viewing level, reducing the physical strains of a long workday, while cable management reduces cable clutter and keeps the workspace neat and professional.

Built-in stereo speakers

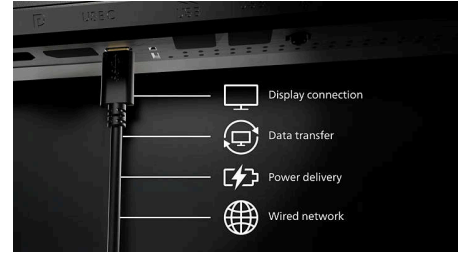


A pair of high-quality stereo speakers built into a display device. They may be visible front firing, or invisible down firing, top firing, rear firing etc. depending on model and design.

High-speed data transfer

USB 3.2 high-speed data transfer

USB-C Docking with RJ45



Simplify all peripherals from monitor to PC using one-cable docking USB Type-C connector, including networking, high-resolution video output from PC to monitor, and surfing on the Internet without an additional network cable, even without a LAN port on your notebook. RJ45 connection through USB-C offers a fast and secure connection when needed. Getting the fastest data speeds allows you to transfer data from a HDD to your PC faster than ever. Additionally, USB-C with power delivery can even enable you to power and charge your notebook from the monitor, eliminating the need for extra power cables.



USB-C Docking

Specifications

Picture/Display

Panel Size: 23.8 inch/60.47 cm
Aspect ratio: 16:9
LCD panel type: IPS technology
Backlight type: W-LED system
Pixel pitch: 0.2058(H) mm x 0.2058(V) mm
Brightness: 350 cd/m²
Display colours: 16.7M (8 bit)
Colour gamut (typical): sRGB 110%, NTSC 98% *
Contrast ratio (typical): 1500:1
SmartContrast: 50,000,000:1
Response time (typical): 4 ms (Grey to Grey)*
Viewing angle: 178° (H)/178° (V), @ C/R > 10
Picture enhancement: SmartImage
Maximum resolution: 2560 x 1440 @ 120 Hz (HDMI/DP/USB-C)*
Effective viewing area: 527.04 (H) x 296.46 (V) mm
Scanning Frequency: 30 - 230 kHz (H)/48 - 120 Hz (V)
sRGB
SoftBlue
Flicker-free
Pixel Density: 123 PPI
Display Screen Coating: Anti-Glare, 3H, Haze 25%
EasyRead
Adaptive sync (VRR)
EyeSafe
Smart Link Sync: When used as a primary or secondary monitor*
DICOM (D-mode)

Connectivity

Signal Input: HDMI 2.1 TMDS x 1, DisplayPort 1.4 x 1, USB-C x 1 (upstream, DP Alt mode, Data, PD)
Sync Input: Separate Sync, Sync on Green
Audio (In/Out): Audio out
RJ45: Ethernet LAN (USB 2.0: 10M/100M; USB 3.0: 1000M), PXE/MAPT/WOL*
Signal Output: DP out
HDCP: HDCP 1.4 (HDMI/DisplayPort/USB-C), HDCP 2.3 (HDMI/DisplayPort/USB-C)
HBR3: Yes (DP, USB-C)
USB Hub: USB3.2, Gen1, 5G, upstream: 1 x USB-C (Full), downstream: USB-A x 3 (with x 1 fast charge B.C 1.2), USB-C2 x 1 (data, 15 W)

Power Delivery

Max power delivery: up to 90 W (5 V/3 A, 7 V/3 A, 9 V/3 A, 10 V/3 A, 12 V/3 A, 15 V/3 A, 20 V/3.25 A, 20 V/4.5 A)
Version: USB PD version 3.0

Convenience

Built-in Speakers: 2 W x 2
Plug and Play Compatibility: DDC/CI, Mac OS, sRGB, Windows 11/10
User convenience: SmartImage, Input, Brightness, Menu, Power On/Off
OSD Languages: Brazil Portuguese, Czech, Dutch, English, French, Finnish, German, Greek, Hungarian, Italian, Japanese, Korean, Portuguese, Polish, Russian, Simplified Chinese, Spanish, Swedish, Traditional Chinese, Turkish, Ukrainian
Other convenience: Kensington lock, VESA mount (100 x 100 mm)
Control software: SmartControl

Stand

Height adjustment: 150 mm
Pivot: -/+90 degree
Swivel: -/+ 180 degree
Tilt: -5/30 degree

Power

ECO mode: 13.7 W (typ.)
Power supply: Built-in, 100–240 VAC, 50–60 Hz
Off mode: 0.3 W (typ)
On mode: 17.38 W (typ.) (Energy Star test method)
Standby mode: 0.3 W (typ)
Power LED indicator: Operation - White, Standby mode - White (flashing)
Energy Label Class: D

Dimensions

Packaging in mm (W x H x D): 615 x 385 x 139 mm
Product without stand (mm): 542 x 320 x 46 mm
Product with stand (max height): 542 x 499 x 228 mm

Weight

Product with packaging (kg): 8.03 kg
Product with stand (kg): 5.70 kg
Product without stand (kg): 4.03 kg

Operating conditions

Altitude: Operation: +12,000 ft (3658 m), Non-operation: +40,000 ft (12,192 m)
Temperature range (operation): 0°C to 40 °C
Relative humidity: 20%-80 %
Temperature range (storage): -20°C to 60 °C
MTBF (demonstrated): 70,000 hrs (excluded backlight)

Sustainability

Environmental and energy: Energy Star, EPEAT*, RoHS
Post-consumer recycled plastic: 85%
Recyclable packaging material: 100 %
Specific Substances: PVC/BFR free housing

Compliance and standards

Regulatory Approvals: CB, CE Mark, TUV/GS, TUV Ergo, TCO Certified, TCO Certified Edge, EAC, EAC ROHS, MEPS, PSE, VCCI, UKCA, EMF, FCC, ICES-003, TÜV Rheinland Low Blue Light (Hardware Solution), eyesafe® CERTIFIED 2.0
Warranty: 5 years*

Cabinet

Finish: Texture
Foot: Black
Front bezel: Black
Rear cover: Black

What's in the box?

Cables: HDMI cable, DP cable, USB-C to C/C cable and Power cable

* "IPS" word mark / trademark and related patents on technologies belong to their respective owners.

* Response time value equal to SmartResponse

* sRGB area based on CIE 1931; NTSC area based on CIE 1976

* EPEAT rating is valid only where Philips registers the product. Please visit <https://www.epeat.net/> for registration status in your country.

* USB-C High Resolution mode enables a maximum resolution of 2560 x 1440 at 120 Hz.

* RJ45 supports PXE (Preboot eXecution Environment), MAC Address Pass-Through (MAPT) and Wake-on-LAN (WOL) on compatible systems. Support may vary depending on system configuration.

* For Smart Link Sync to function properly, all daisy-chained monitors must be compatible with Smart Link.

* The 5 year warranty is a voluntary manufacturer's limited warranty. It applies only in the countries listed on this page <https://www.philips.co.uk/c-e/so/monitors/tco-certified-edge>. For consumers, it is provided in addition to, and without affecting, their legal rights under applicable national laws. For non-consumer (business/professional) end users, only the manufacturer's limited warranty terms apply.

* The products and accessories listed on this leaflet may differ by country and region.

* The monitor may look different from feature images.

