



Purpose Built for Power Users



Precision 3490

Work anywhere with a small, powerful workstation.

An ultra-mobile workstation that is great for multi-tasking across collaboration, business, and office applications.

Intelligent performance

Intel Core Ultra processors, 15W or 28W, up to 16 cores with vPro Enterprise options featuring integrated Intel Arc graphics and AI Boost technology. Up to NVIDIA RTX 500 Ada Gen graphics.

Memory & Storage:
Up to 64GB of 5600 MT/s DDR5 memory for all processors Up to 2TB Gen4 M.2 SSD

Advanced thermal management,

with Dual Opposing Output (DOO) fan and User Selectable Thermal Tables

Spill-proof Pro2 keyboard with backlit option

4G LTE, 5G FirstNet Certified

WiFi 6E, 4G LTE, 5G LTE with FirstNet Certification, Bluetooth 5.3

Industry's most secure commercial PCs¹

Only Dell offers off-host BIOS verification and Indicators of Attack to reduce exposure to future threats. Secured Component Verification, offered only by Dell, helps ensure PCs are secure from factory to first boot. Dell and Intel reduce the attack surface. The latest Intel vPro-based PCs provide an estimated 70% attack surface reduction.²

Up to FHD HDR IR camera with AI-based proximity sensors, Manual Privacy Shutter, Fast sign-in intelligent noise microphone.

Reliability

ISV Certified
MIL STD tested
Long Lifecycle Battery options

FHD, 100% sRGB, 400nits,

Touch Panels Available
Premier Color, ComfortView Plus, Low-Blue-Light (LBL), Super Low Power (SLP) options available

Optional Finger Reader

integrated with power button Windows Hello capable

Titan Gray palm rest

Large glass-like, multi-touch clickpad

Starting weight is 3.06lbs/ 1.39kg

Up to 130W Type-C adapter
Up to 3-cell 54Whr battery

Simplified PC Updates

Get the latest BIOS, drivers and firmware versions, validated and delivered seamlessly from Dell.

Sustainability

This workstation has achieved the EPEAT Gold Climate+ designation, meeting industry best practices for decarbonization.³ This year, this workstation will ship with 50% recycled cobalt in battery.⁴

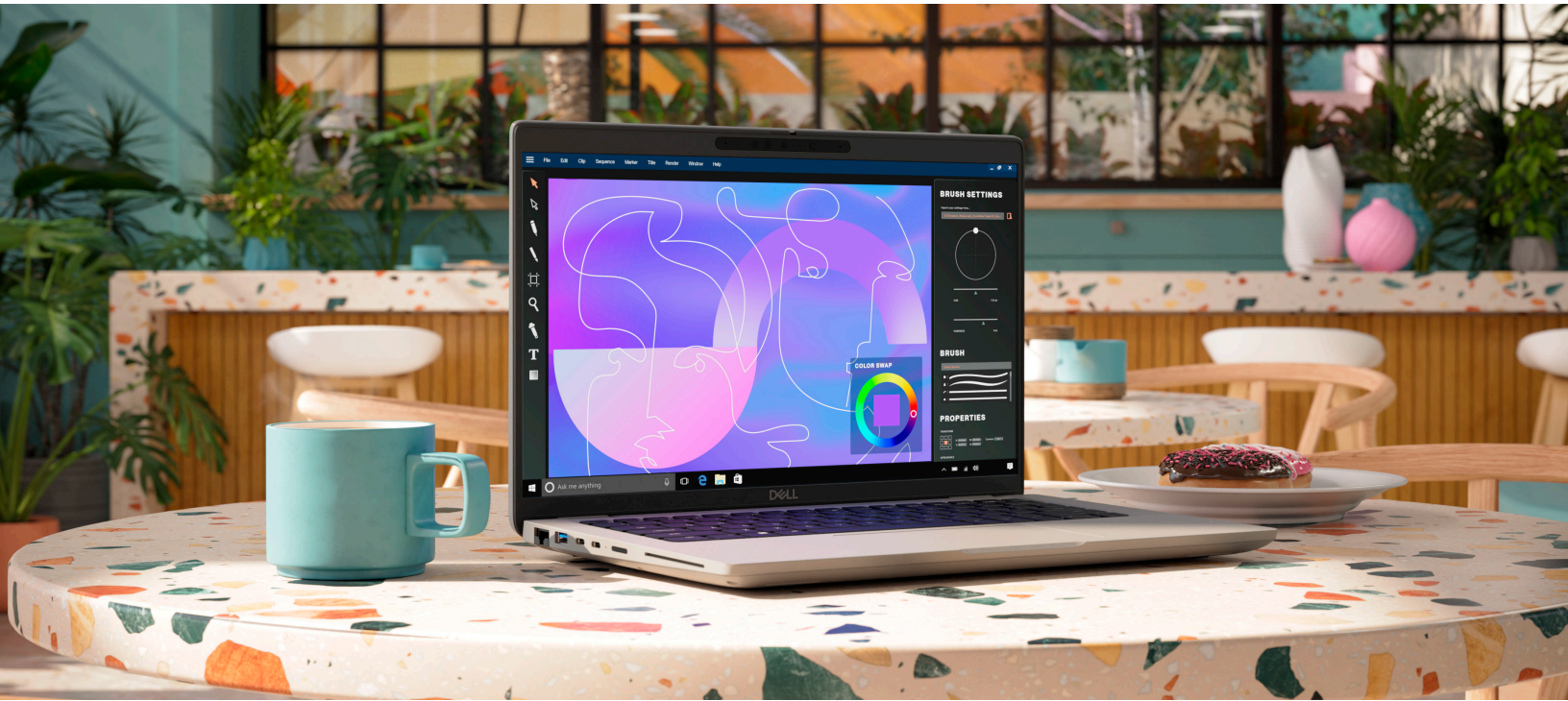
[Click here](#) to see the 360 degree view of the Precision 3490

¹Based on Dell internal analysis, September 2023. Applicable to PCs on Intel processors. Not all features available with all PCs. Additional purchase required for some features.

²The latest Intel vPro based PCs provide an estimated 70% attack surface reduction compared to four-year-old devices. Based on IOActive's "Intel vPro 13th Gen Attack Surface Study" published March 2023 (commissioned by Intel), which evaluates Intel vPro devices powered by 13th Gen Intel Core processors against four-year-old Intel-based PCs on Windows OS. Details at www.intel.com/performance-vpro. Results may vary.

³Based on internal analysis, January 2024. Based on EPEAT Climate+ Designations achieved in all applicable countries. EPEAT registered where applicable. EPEAT registration varies by country. See www.epeat.net for registration status and tier levels.

⁴Based on internal analysis, January 2024. Shipping timelines may vary based on region and laptop configuration



Intelligent performance

This thin and light, cost-effective workstation packs intelligent performance, based on the new Intel® Core™ Ultra processors that feature fast, integrated Intel® Arc graphics and AI Accelerators featuring NPU for Intel® AI Boost with vPro options and Copilot in Windows 11 - taking advantage of advancing AI technologies to improve user productivity across business and industry applications. The latest technologies from Intel, Microsoft and NVIDIA provide new levels of performance for growing world of AI.



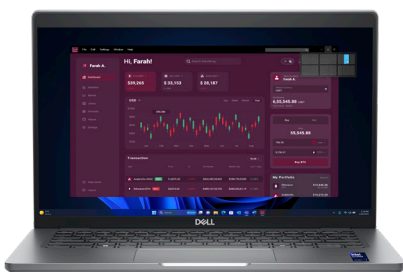
Immersive productivity and design

This 14" workstation delivers an exceptional user experience. Jumpstart your workflow with the **Copilot Hardware Key**, which provides quick access to the tools you need to start your workday. Revolutionize your meetings with **Windows Studio Effects**. Keep your audience engaged with **video auto-framing** and maintain eye contact effortlessly, even while referencing your notes, thanks to **AI-eye tracking technology**. Elevate your experience with AI-powered tools from Windows 11. Easily make use of the **Snipping Tool**, **voice access**, and **smart recommendations** within File Explorer and your Start menu.



Mission critical reliability and security

All Dell Precision workstations are tested and certified by independent software vendors to ensure reliability performance. Secure your workstation in our hybrid world with the industry's most secure commercial PCs* with built-in features that our competitors cannot match. Plus, they are MIL STD tested. Be secure in the office or on the road with features like an optional Smart Card Reader, optional Fingerprint Reader, and HDR IR Camera with proximity sensor. Layer on advanced threat protection with industry-leading partner software. Windows Hello and proximity sensor. Layer on advanced threat protection with industry-leading partner software. Truly embrace hybrid work with secure and reliable 4G and 5G connectivity.



*Based on Dell internal analysis, September 2023. Applicable to PCs on Intel processors. Not all features available with all PCs. Additional purchase required for some features

Simplify IT

Our most secure¹ and most manageable⁴ offerings make IT management a breeze

World's Most Secure Commercial PCs¹

According to Principled Technologies, no PC manufacturer offers the BIOS-level visibility Dell does.

A Principled Technologies report: In-depth research. Real-world value.

A comparison of security features in Dell, HP, and Lenovo PC systems

Approach

Dell™ commissioned Principled Technologies to investigate 10 security features in the PC security and system management space:

- Support for monitoring solutions
- BIOS security and protection features
 - Platform integrity validation
 - Device integrity validation via off-site measurements
 - Component integrity validation for Intel® Management Engine (ME) via off-site measurements
- BIOS image capture for analysis
- Built-in hardware cache for monitoring BIOS changes with security information and event management (SIEM) integration
- Microsoft Intune management
 - BIOS setting management integrations for Intune
 - BIOS access management security enhancements for Intune

SECURITY

Improve fleet-wide security with multiple layers of defense.

Reduce the attack surface and enhance long-term cyber resilience with [Dell Trusted Workspace](#)



Be secure from first boot with rigorous supply chain controls.



Maintain BIOS integrity with deep, firm-ware-level visibility.



Protect end-user identity from malware that looks to steal credentials.



Enrich OS-level data with PC telemetry to speed detection, response and remediation.



Layer on advanced threat protection from our ecosystem of best-of-breed software partners.

MANAGEABILITY

Manage your fleet of PCs - reliably and easily

Help secure and optimize your endpoints and deliver end-user productivity with [Dell Manageability Solutions](#)

With [Dell Management Portal](#), you can manage Dell PCs, over the cloud, in conjunction with Microsoft Intune. [Learn more >](#)

[Dell Trusted Update Experience](#) makes it simple to update endpoints with the latest BIOS, driver, and firmware versions. Dell is the only Top-5 PC vendor that:



Publishes² a device drivers and downloads release schedule:

IT Admins can deploy fleet-wide device updates on a predictable timeline.



Performs³ integrated validation of all driver and BIOS modules in an update:

IT Admins can expect a trusted, system compatible update deployment, across a fleet of devices.

[Learn More >](#)




Dell has the industry's first:⁵

Partner Portal accessible in Microsoft Intune, with fleet-wide BIOS password access capability and Enterprise application access and publication capabilities

Binary Large Object (BLOB) package-based solution, for endpoint BIOS settings configuration, using Microsoft Intune

Hardware OEM systems management solution to integrate with Intel vPro





Shrink the IT-security gap with an integrated, AI-enabled solution

Explore hardware-assisted security with Dell, Intel & CrowdStrike.

[Learn More >](#)



Mobile Workstation Solution

Create your ideal workspace with these recommended accessories.

As the world's #1 monitor company¹, Dell knows that the modern workplace requires more than PCs. We offer 200+ branded accessories to keep you connected and collaborative no matter your work style.



A



B



C

A. Dell UltraSharp 34 Curved Thunderbolt™ Hub Monitor - U3425WE

B. Dell 24 Monitor - P2423D

C. Dell Thunderbolt™ 4 Dock - WD22TB4



D



E



F

D. Dell Premier Wireless Keyboard and Mouse - KM7321W

E. Dell EcoLoop Pro Backpack - CP5723

F. Dell Wireless Headset - WL3024



Customize your workspace, simplify management and enhance privacy with [Dell Display Manager](#) and [Dell Peripheral Manager](#).

▶ Discover more solutions for the modern workplace



Sustainability on Dell Precision 3490

Delivering innovative technology and solutions to collectively lower our environmental impact.

Built with Sustainable Materials

Your Precision workstation is crafted with a variety of sustainable materials including post-consumer recycled plastic, ocean-bound plastic, bio-based plastic and reclaimed carbon fiber. This year, this workstation will start shipping with 50% recycled cobalt in the battery.¹ This workstation is made with 40% recycled plastic² and ships with an adapter designed with 95% post-consumer recycled plastic in the case and AC inlet and 98% recycled aluminum in the thermal shielding or heat sink.³

Environmental Certifications & Registrations

Meeting environmental standards demonstrate how our products adhere to energy-efficiency specifications and other extensive climate-related standards. This workstation is Certified ENERGY STAR[®] 8.0, TCO certified, generation 9 and EPEAT gold registered with Climate+ designation.⁶

Lifecycle Management

Dell APEX offerings and Asset Recovery Services make it easier for our customers to modernize responsibly, and reduce over-provisioning and e-waste, on schedule and within budget. Dell makes it easy to access and replace parts to get the most life out of our products.

[Learn more>](#)

Low-impact Packaging

Your Precision 3490 workstation ships in packaging made with 100% recycled or renewable content, that is also 100% recyclable.⁴ It is eligible for multipack to reduce packaging and transportation waste.⁵



See how we are reducing the impact of our products and solutions Dell.com/Sustainable-Devices

¹Based on internal analysis, January 2024.

Recycled cobalt: Shipping timelines may vary based on region and laptop configuration

Recycled plastic: 30% in LCD cover lid, 30% in LCD antenna window, 50% in LCD bezel, 50% in palm-rest, 50% in inner frame, 30% in bottom door, 35% in battery filler, 50% in battery housing, 30% in speaker enclosure, 28% ocean bound plastic in fan housing, 21% bio-based plastic in LCD cover lid, 21% bio-based plastic in bottom door, 42% bio-based plastic in the feet at the bottom of the device

Reclaimed carbon fiber including 20% in the lid and 20% in the bottom door, 50% recycled cobalt in laptop battery

²Based on internal analysis, February 2024. Percentage is based on system plastic weight

Contains 38.8% recycled content and 61.2% renewable materials. Renewable materials in the form of sustainably

forested fibers. Percentages may vary slightly by region. Excludes optional items added to order and included in box. Paper packaging materials can be recycled via municipal recycling, where available. System bag is made from recycled plastic and can be recycled along with other thin

plastics. See local recycling guidelines.

³Based on internal analysis, January 2024

⁴Based on internal analysis, January 2024. Based on EPEAT Climate+ Designations achieved in all applicable countries. EPEAT registered where applicable. EPEAT registration varies by country. See www.epeat.net for registration status and tier levels.

⁵Based on internal analysis, January 2024.

| FEATURE | TECHNICAL SPECIFICATION | FEATURE | TECHNICAL SPECIFICATION |
|-------------------------------------|---|--|--|
| MODEL NUMBER¹ | Precision 3490 | | |
| PROCESSOR¹ | Intel® Core™ Ultra 5 125U vPro® Essentials (12 MB cache, 12 cores, up to 4.30 GHz) Intel® Core™ Ultra 7 155U vPro® Essentials (12 MB cache, 12 cores, up to 4.80 GHz) Intel® Core™ Ultra 5 125H vPro® Essentials (18 MB cache, 14 cores, up to 4.50 GHz) Intel® Core™ Ultra 5 135H vPro® Enterprise (18 MB cache, 14 cores, up to 4.60 GHz) Intel® Core™ Ultra 7 155H vPro® Essentials (24 MB cache, 16 cores, up to 4.80 GHz) Intel® Core™ Ultra 7 165H vPro® Enterprise (24 MB cache, 16 cores, up to 5 GHz) | PRODUCTIVITY SW¹ | Dell Command Update (DCU) Dell Digital Delivery - Cirrus Client Dell Optimizer Excalibur MS Office MS Office - single language MS Office Home Business Non-Premium (Japan) MS Office Personal Non-Premium (Japan) MS Office Pro Non-Premium (Japan) SupportAssist |
| OPERATING SYSTEM¹ | Windows 11 Pro Windows 11 Home Ubuntu® 22.04 LTS Red Hat 9.4 (validation only) | PRIMARY HARD DISK DRIVE^{1,5} | 256 GB, M.2 2230, Gen 4 PCIe NVMe, SSD, Class 35 512 GB, M.2 2230, Gen 4 PCIe NVMe, SSD, Class 35 512 GB, M.2 2230, Gen 4 PCIe NVMe, SED, Class 35 1 TB, M.2 2230, Gen 4 PCIe NVMe, SSD, Class 35 2 TB, M.2 2230, Gen 4 PCIe NVMe, SSD, Class 25 |
| MEMORY^{1,2,3} | 8 GB: 1 x 8 GB, DDR5, 5600 MT/s, single-channel 16 GB: 1 x 16 GB, DDR5, 5600 MT/s, single-channel 16 GB: 2 x 8 GB, DDR5, 5600 MT/s, dual-channel 32 GB: 2 x 16 GB, DDR5, 5600 MT/s, dual-channel 32 GB: 1 x 32 GB, DDR5, 5600 MT/s, single-channel 64 GB: 2 x 32 GB, DDR5, 5600 MT/s, dual-channel | ACCIDENTAL DAMAGE SERVICES | 1-year Accidental Damage Service 2-year Accidental Damage Service 3-year Accidental Damage Service 4-year Accidental Damage Service 5-year Accidental Damage Service 1-year Accidental Damage with Theft Service 2-year Accidental Damage with Theft Service 3-year Accidental Damage with Theft Service 4-year Accidental Damage with Theft Service 5-year Accidental Damage with Theft Service 1-year Accidental Damage Protection 2-year Accidental Damage Protection 3-year Accidental Damage Protection 4-year Accidental Damage Protection 5-year Accidental Damage Protection |
| WARRANTY^{9,10} | 1Y hardware warranty with on-site/in-home service after remote diagnosis 2Y hardware warranty with on-site/in-home service after remote diagnosis 3Y hardware warranty with on-site/in-home service after remote diagnosis 4Y hardware warranty with on-site/in-home service after remote diagnosis 5Y hardware warranty with on-site/in-home service after remote diagnosis 1Y ProSupport Suite 2Y ProSupport Suite 3Y ProSupport Suite 4Y ProSupport Suite 5Y ProSupport Suite 2Y Data and Protective Services Extended Battery Services (EBS) - FRU Batteries Only 3Y Data and Protective Services Extended Battery Services (EBS) - FRU Batteries Only | PORTS | (2) Thunderbolt™ 4 (40 Gbps) with DisplayPort™ Alt Mode/USB Type-C/USB4/Power Delivery USB 3.2 Gen 1 port with PowerShare USB 3.2 Gen 1 port HDMI 2.1 port Universal audio port RJ45 Ethernet port |
| VIDEO CARD | Integrated Graphics: Intel® Arc™ Graphics - For Intel® Core™ H processors and requires 128-bit (dual-channel) memory with minimum of 16 GB memory Intel® Graphics Discrete Graphics: NVIDIA® RTX™ 500 Ada Generation, 4 GB GDDR6 | SLOTS | Wedge-shaped lock slot Nano-SIM card slot (optional) Smart card reader slot (optional) |
| DISPLAY | 14", FHD 1920x1080, 60Hz, IPS, Non-touch, Anti-Glare, 250 nit, 100% sRGB, 45% NTSC 14", FHD 1920x1080, 60Hz, IPS, Touch, Anti-Glare, 300 nit, 100% sRGB, 72% NTSC 14", FHD 1920x1080, 60Hz, IPS, Anti-Reflect/Anti-Smudge, Non-touch, 400 nit, 100% sRGB, Low Blue Light, Super Low Power | TOUCHPAD | Multi-touch gesture-enabled precision touchpad, seamless glass-integrated button |
| CASE COLOR | Titan Gray | REGULATORY^{8,12} | Product Safety, EMC and Environmental Datasheets Dell Regulatory Compliance Home Page Responsible Business Alliance policy |
| OPTICAL DRIVE | No optical drive | CHIPSET | 14th Generation Intel MTL-H 14th Generation Intel MTL-U |
| CAMERA | 1080p at 30 fps, FHD RGB HDR camera, Temporal Noise Reduction, Dual-array microphones 1080p at 30 fps, FHD RGB-IR HDR camera camera, Temporal Noise Reduction, Dual-array microphones 1080p at 30 fps, FHD RGB-IR HDR camera camera, Temporal Noise Reduction, Dual-array microphones, Ambient light sensor, Express Sign-In™ with Presence Detection and Intelligent PrivacyExpressSign-in™ with Presence Detection and Intelligent Privacy | INPUT | 3Dconnexion SpaceMouse Wireless - 3DX-700066 Dell Premier Multi-Device Wireless Keyboard and Mouse - KM7321W Wacom Cintiq Pro 24 Creative Pen Display Touch - DTH-2420 Dell Premier Rechargeable Wireless Mouse - MS7421W |

| FEATURE | TECHNICAL SPECIFICATION | FEATURE | TECHNICAL SPECIFICATION |
|-------------------------------------|--|--|---|
| MODEL NUMBER¹ | Precision 3490 | | |
| KEYBOARD¹ | English US non-backlit keyboard, 79-key English US backlit keyboard, 79-key English International non-backlit keyboard, 79-key English International backlit keyboard, 79-key Japanese non-backlit keyboard, 83-key Spanish (Latin America) non-backlit keyboard, 80-key French (Canadian) Quebec non-backlit keyboard, 80-key French (Canadian) backlit keyboard, 79-key Arabic backlit keyboard, 79-key Canada (Bilingual) (MUI) backlit keyboard, 79-key Chinese (Traditional) backlit keyboard, 79-key Greek backlit keyboard, 79-key Hebrew backlit keyboard, 79-key Korean backlit keyboard, 79-key Russian backlit keyboard, 79-key Thai backlit keyboard, 79-key Ukrainian backlit keyboard, 79-key Japanese backlit keyboard, 83-key Portuguese (Brazil) backlit keyboard, 80-key Belgian backlit keyboard, 80-key Bulgarian backlit keyboard, 80-key Czech/Slovak (MUI) backlit keyboard, 80-key Danish backlit keyboard, 80-key English UK backlit keyboard, 80-key Estonian backlit keyboard, 80-key French (European) backlit keyboard, 80-key German backlit keyboard, 80-key Hungarian backlit keyboard, 80-key Icelandic backlit keyboard, 80-key Italian backlit keyboard, 80-key Nordic (MUI) backlit keyboard, 80-key Norwegian backlit keyboard, 80-key Portuguese Iberian backlit keyboard, 80-key Slovenian backlit keyboard, 80-key Spanish (Castilian) backlit keyboard, 80-key Spanish (Latin America) backlit keyboard, 80-key Swedish/Finnish backlit keyboard, 80-key Swiss/European (MUI) backlit keyboard, 80-key Turkish backlit keyboard, 80-key Turkish (F) backlit keyboard, 80-key | WIRELESS | WLAN: Realtek Wi-Fi 6 RTL8852BE, 2x2, MIMO, 802.11ax, Bluetooth® 5.3 wireless card Intel® Wi-Fi 6E AX211, 2x2, MIMO, 802.11ax, Bluetooth® 5.3 wireless card WWAN: 4G CAT12 - Qualcomm® Snapdragon™ SDX12 Global LTE-Advanced (DW5825e), eSIM 5G - Qualcomm® Snapdragon™ X62 Global 5G (DW5932e), eSIM capable 5G - Qualcomm® Snapdragon™ X62 Global 5G (DW5932e), no eSIM |
| DOCKING | Dell Thunderbolt Dock – WD22TB4 | POWER | Integrated Graphics only: 65W AC adapter, USB Type-C Integrated/Discrete Graphics: 100W AC adapter, USB Type-C, E5 130W AC adapter, USB Type-C, E5 |
| AUDIO N SPEAKERS¹ | Stereo speakers with with Waves MaxxAudio® Pro 13.0, 2W x 2 = 4W total | Intel Responsiveness Technologies | Intel® Active Management Technology (iAMT) |
| PRIMARY BATTERY | 3-cell, 42 Wh, ExpressCharge™, ExpressCharge™ Boost 3-cell, 42 Wh, Long Cycle Life, ExpressCharge™ 3-cell, 54 Wh, ExpressCharge™, ExpressCharge™ Boost 3-cell, 54 Wh, Long Cycle Life, ExpressCharge™ | DIMENSIONS | US Height (rear): 0.83 in. (21.04 mm) Height (front): 0.75 in. (19.06 mm) Width: 12.65 in. (321.35 mm) Depth: 8.35 in. (212 mm) Starting weight: 3.09 lb (1.40 kg) Rest of the world Height (rear): 21.04 mm (0.83 in.) Height (front): 19.06 mm (0.75 in.) Width: 321.35 mm (12.65 in.) Depth: 212 mm (8.35 in.) Starting weight: 1.40 kg (3.09 lb) |
| SENSORS | Accelerometer for adaptive thermal | SYSTEMS MANAGEMENT | Dell Client Command Suite: Streamline how you deploy drivers, configure BIOS, monitor devices and manage updates. Dell Trusted Update Experience: Simplify how you update your endpoints with the latest BIOS, drivers and firmware versions |

| FEATURE | TECHNICAL SPECIFICATION | DESCRIPTION | |
|--|--|--|---|
| MODEL NUMBER¹ | Precision 3490 | | |
| HARDWARE & FIRMWARE SECURITY (INCLUDED) | Dell Trusted Device | Generates insights into the security state of a platform, monitoring changes to BIOS attributes, detecting possible tampering of BIOS firmware, and more. | |
| | Dell SafeBIOS | Verify the integrity of the BIOS with tamper detection and secure, off-host BIOS image capture. | |
| | Dell SafeBIOS Indicators of Attack | Scan for behavior-based threats for early detection by enabling telemetry integration with popular third-party security and endpoint management solutions. Includes Microsoft Intune, Carbon Black Cloud, CrowdStrike, Splunk. | |
| | Dell SafeBIOS Common Vulnerabilities & Exposures (CVE) Detection | Identify and address known BIOS vulnerabilities and patch devices swiftly. *Available early 2024. | |
| HARDWARE & FIRMWARE SECURITY (OPTIONAL) | Dell SafeID | Secure end-user credentials. This unique hardware-based security solution provides a hardened and secure bank for storing and processing user credentials. Dependent on model. Credential security options may include: Secure interaction with Imprivada for authenticating credentials on multi-user devices Finger Print Reader in Power Button tied to ControlVault 3 ControlVault 3 Advanced Authentication with FIPS 140-2 Level 3 Certification Contacted Smart Card and ControlVault 3 Contactless Smart Card, NFC, and ControlVault 3 SED SSD NVMe, SSD and HDD (Opal and non-Opal) per SDL FIPS 201 Full Scan Finger Print Reader and ControlVault Trusted Platform Module (TPM) 2.0 discrete FIPS 140-2 certification for TPM | |
| | Dell Secured Component Verification | Provides assurance that the device and its components remain secure from factory to first boot. On-device and cloud-based options available. Availability varies by region. | |
| | Tamper-evident packaging | Detect tampering with this supply chain assurance offering. Availability varies by region. | |
| | Hard drive wipes | Sanitize the hard drive in accordance with National Institute of Standards and Technology (NIST) guidelines with this supply chain assurance offering. Availability varies by region. | |
| | Dell SafeShutter | Ensure user privacy with webcam shutter. | |
| | Intel ME Verification | Verify the integrity of critical firmware using a secure off-host source. Requires Intel vPro. | |
| | Chassis intrusion switch | Remotely detects hardware tampering and is integrated with Dell SafeBIOS Indicators of Attack. | |
| | Kensington Security Slot™ | Device locking option helps reduce the risk of a data breach. Standard slot that can be paired with a standard security cable lock. Spec varies by model: Dell Fixed Workstations (Desktops): Kensington Security Slot™ (T-bar) Dell Laptops: Kensington Security Slot™ (Wedge) | |
| | Fingerprint reader | Fingerprint reader in Power button tied to ControlVault 3+ secures end-user credentials. | |
| | OPAL drive / Self-encrypting drive (SED) | Hardware-based full disk encryption that protects user data without storing encryption keys in RAM where it can be accessed by malicious parties. | |
| | SPI Flash Tamper Detection Circuit | Detects and prevents tampering with BIOS SPI flash chips on the motherboard. | |
| | SOFTWARE SECURITY (OPTIONAL) | Dell SafeGuard & Response: CrowdStrike, Carbon Black, Secureworks | Threat detection and response/remediation. |
| | | Dell SafeData: Absolute | Self-healing for applications and networks. |
| Dell SafeData: Netskope | | Cloud and network data protection. | |
| McAfee Business Protection | | Simple, automated, all-in-one security made for small businesses. | |

| FEATURE | TECHNICAL SPECIFICATION | DESCRIPTION |
|--|--|--|
| SUSTAINABLE MATERIALS¹ | <p>Post-consumer recycled plastic (PCR) and closed loop ITE derived plastic - chasses</p> <p>Post-consumer recycled plastic:30% in LCD cover lid, 30% in LCD antenna window, 50% in LCD bezel, 50% in palm-rest, 50% in inner frame, 30% in bottom door, 35% in battery filler, 50% in battery housing, 30% in speaker enclosure</p> <p>Post-consumer recycled plastic (PCR) - power adapter (65-Watt): 95% in adapter case and AC inlet (100-Watt): 90% in adapter case (60-Watt): 95% in adapter case</p> <p>Recycled aluminum - power adapter (65-Watt): 98% recycled aluminum in thermal shielding</p> <p>Recycled and low emissions aluminum: N/A</p> <p>Recycled copper - power adapter (100-watt): 50% recycled copper in adapter cable</p> <p>Recycled ocean-bound plastic: 28% ocean bound plastic in fan housing</p> <p>Post-industrial recycled steel: N/A</p> <p>Bio-based plastic: 21% bio-based material in LCD cover lid, 21% bio-based material in bottom door 42% bio-based material in the feet at the bottom of the device</p> <p>Reclaimed carbon fiber: 20% in LCD cover lid; 20% in bottom door</p> <p>Recycled cobalt: 50% in battery</p> <p>Recycled or renewable packaging materials: 100% recycled, renewable and recyclable packaging</p> | <p>Post-consumer recycled plastic is plastic waste generated by households, industrial, commercial or institutions repurposed in the desktop design. Closed loop plastic is reclaimed plastic from any disposed IT product repurposed in the desktop design.</p> <p>Recycling aluminum helps divert material from landfills, where it would otherwise contribute to the growing problem of waste disposal. Aluminum is durable and does not degrade during the recycling process, making it a material that can be recycled repeatedly.</p> <p>The combination of using low emissions aluminum which is aluminum derived from a hydropower source and recycled aluminum helps reduce the carbon footprint of the material by up to 90%</p> <p>Recycling copper helps preserve finite natural resources because it reduces the need for extensive mining and extraction of copper ore that is a more energy intensive process</p> <p>Ocean-bound plastic is collected within 50km (30mi) distance of an ocean coastline or major waterway that feeds into the ocean. Using ocean-bound plastic reduces the risk of endangering marine life and ecosystem with plastic waste.</p> <p>Incorporating recycled steel helps minimize the usage of virgin material and related mining activities, while re-purposing waste that would have ended up in landfills (Available for select OptiPlex tower configurations).</p> <p>Bio-based materials that are derived from non-petroleum-based biological resources. The bio-based plastic used in the lid and door is derived from tall-oil, a byproduct in the paper making process.</p> <p>Reclaimed carbon fiber is derived from waste generated in the production of carbon fiber for the aerospace industry. It is considered to be a pre-consumer recycled material.</p> <p>Majority of recycled cobalt used in PC batteries is sourced from the EV batteries and the remainder is sourced from consumer electronics. Virgin cobalt resources are fast depleting and using recycled cobalt helps build a circular economy. Using recycled cobalt is a less energy intensive process and produces lesser waste than mining virgin cobalt</p> <p>Using recycled or renewable materials lowers waste and helps lower environmental impact. Materials may include recycled content and/or</p> |
| ECO-LABELS¹ | <p>EPEAT Climate+(™) Yes</p> <p>EPEAT GOLD</p> <p>TCO Certified, Gen 9 Yes</p> <p>Energy Star 8.0 Yes</p> | <p>This is a product level designation for EPEAT-registered products which meet the industry's best climate criteria.</p> <p>Meeting globally recognized eco-label certifications for sustainable IT, our customers can trust that Dell products adhere to the highest energy-efficiency specifications and other climate-related standards.</p> <p>Product registry: https://www.epeat.net/</p> <p>TCO Certified is a leading sustainability certification for IT products, with a comprehensive system of up-to-date criteria and independent verification.</p> <p>Product registry: https://tcocertified.com/product-finder/</p> <p>Energy Star 8.0 is a specification recognizing the most energy-efficient PC's, backed by Environmental Protection Agency (US).</p> |
| MULTI-PACK SHIPPING¹ | Dell Multi-pack: Yes | Dell Multi-pack offers a simpler, more efficient unboxing experience vs. single pack products, with less packaging waste and better pallet optimization for transportation. |
| ASSET RECOVERY SERVICES⁶ | Asset Recovery Services: Yes | Asset Recovery Services helps our customers resell, recycle or return-to-lease legacy IT equipment in a secure and sustainable manner, while unlocking value that can be put towards future innovation. |
| GLOBAL COMPLIANCE | <p>US CEC MEPS compliant configurations available</p> <p>Australia and New Zealand MEPS compliant configurations available</p> <p>CEL</p> <p>WEEE</p> <p>Japan Energy Law</p> <p>South Korea E-standby</p> <p>EU RoHS</p> <p>China RoHS</p> <p>(available for all OptiPlex All-in-One configurations)</p> | |
| REGULATORY^{4,6} | <p>Product Safety, EMC and Environmental Datasheets</p> <p>Dell Regulatory Compliance Home Page</p> <p>Dell and the Environment</p> <p>Arsenic free, halogen free</p> | |

Legacy, scale and innovation

Dell Technologies is your trusted partner for the future of work

Dell Technologies APEX

1st

and most comprehensive¹

As-a-service portfolio that spans from multi-cloud to client devices.

Experience the flexibility to transform your IT and deploy the latest technologies at predictable costs.

Dell APEX PC-as-a-Service

Fully customizable subscription covers everything - devices, software and services; available from one-to-five-year terms.

Dell APEX Managed Device Service

Fully managed, subscription with a team of IT experts to keep business devices up-to-date and secure; and no year-long commitment (US only).

[Learn more>](#)

Asset Recovery Services

2.6B

Pounds of electronics recovered since 2007⁶

Let Dell help you securely and responsibly retire your old IT equipment - regardless of brand - to allow for a seamless transition from old to new technology, while protecting both your business and the planet.

[Learn more>](#)

AI-driven support services

36TB

Telemetry data processed per day²

Evolving with you, using machine learning and an AI engine that learns fast. Trust Dell Technologies to deliver hyper-efficient, automated IT support, drawn from decades of AI experience and top-ranked services.

[Learn more>](#)

ProDeploy Client Suite for PCs

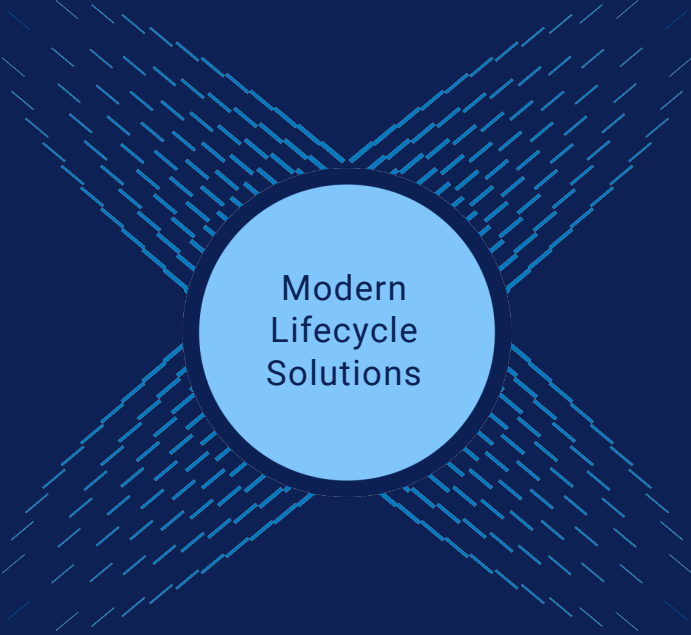
30K+

PC's configured daily³

For organizations of any size, find the right-sized deployment solution to solve an array of IT needs.

35 years of deployment expertise from Dell ensures seamless experiences for configuration, imaging, and provisioning; as well as asset tagging and warehousing.

[Learn more>](#)



Modern
Lifecycle
Solutions

Dell Premier

297%

ROI over 4 years⁵

Modernize IT purchasing by shopping your catalog in a tailored online solution. Gain control over the entire IT ecosystem to cut costs, standardize ordering, access analytics and more.

[Learn more>](#)

ProSupport Suite for PCs

641

Hours of admin time saved per year⁴

With advanced telemetry and AI, IT teams can remotely manage the health of their Dell fleet, anticipate and resolve issues and automate PC updates.

[Learn more>](#)

TECHNOTES:

1. [Offering may vary by region. Some items may be available after product introduction. For complete details, refer to the Owner's Manual published on \[www.dell.com/support\]\(http://www.dell.com/support\).](#)
2. System Memory and Graphics: Significant system memory may be used to support graphics, depending on system memory size and other factors.
3. 4GB or Greater System Memory Capability: A 64-bit operating system is required to support 4GB or more of system memory.
4. Particular versions of Microsoft Windows may not support the full Bluetooth 4.2 functionality
5. Storage Option: GB means 1 billion bytes and TB equals 1 trillion bytes; actual capacity varies with preloaded material and operating environment and will be less.
6. TPM is available in selected regions.
7. [Please refer to \[www.epeat.net\]\(http://www.epeat.net\) for specific country registration rating and participation.](#)
8. [Limited Hardware Warranty: For copy of Ltd Hardware Warranty, write Dell USA LP, Attn: Warranties, One Dell Way, Round Rock, TX 78682 or see \[www.dell.com/warranty\]\(http://www.dell.com/warranty\).](#)
9. Onsite service after Remote Diagnosis: Remote Diagnosis is determination by online/phone technician of cause of issue; may involve customer access to inside of system and multiple or extended sessions. If issue is covered by Limited Hardware Warranty (<https://www.dell.com/warranty>) and not resolved remotely, technician and/or part will be dispatched, usually within 1 business day following completion of Remote Diagnosis. Availability varies. Other conditions apply.
10. [Dell Services: Availability and terms of Dell Services vary by region. For more information, visit \[www.dell.com/servicesdescriptions\]\(http://www.dell.com/servicesdescriptions\).](#)
11. [For complete listing of declarations and certifications, refer to the Dell Regulatory and Environmental Datasheet found in the Manuals section of Product Support information \[www.dell.com/support/home/us/en/19\]\(http://www.dell.com/support/home/us/en/19\).](#)